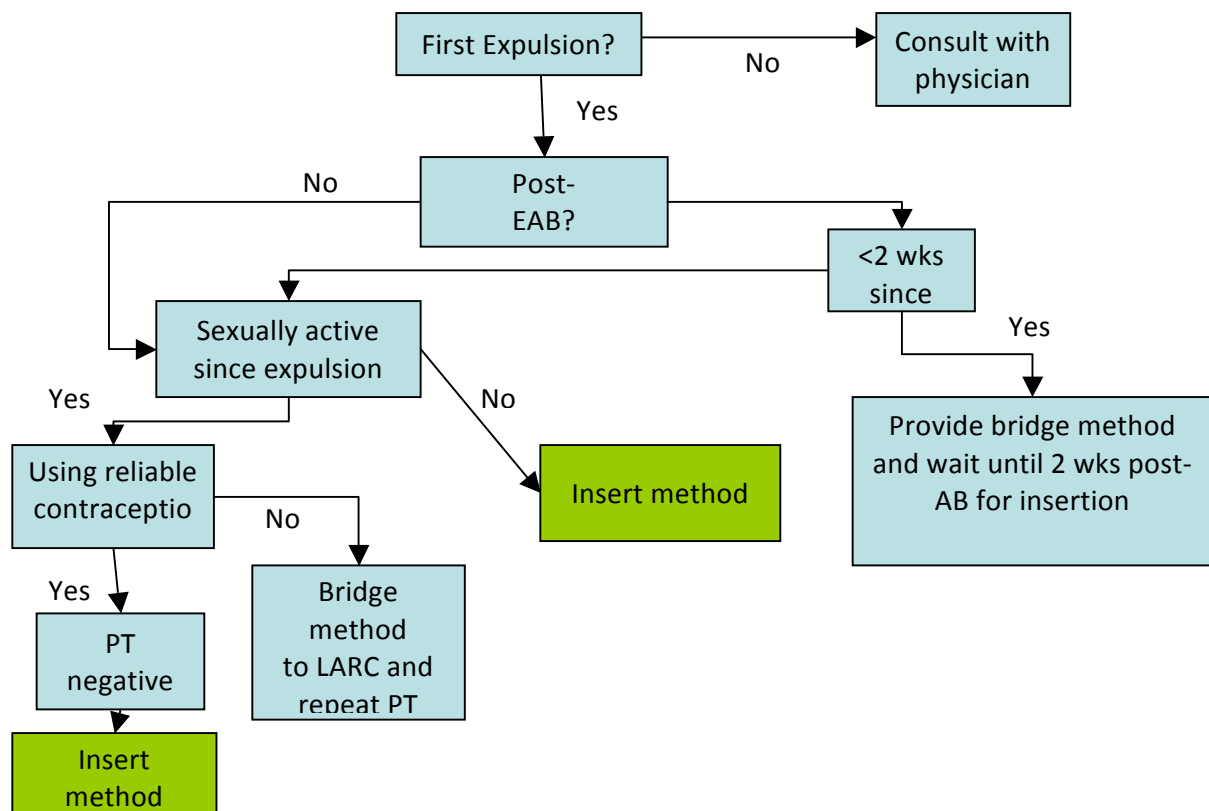


**Advanced Practitioner Resources: Provision Guides**

modification date:	June 11, 2013
content:	IUD Expulsion and Reinsertion Algorithm

**Overview**

This document describes the algorithm used by the CHOICE Project in re-inserting and IUD into a patient with a previous IUD expulsion.



**Notes:**

**If in doubt, do a pregnancy test!**

**Bridge method** = Quickstart OCP, patch or ring with back-up x 7 days. If repeat pregnancy test is negative in 3 weeks and the woman reports using her method consistently, okay to insert LARC

**Reliable contraception** = OCP, patch, ring, condoms being used consistently by the woman or birth control shot within 14 wks