

**Evidence: Data on Unintended Pregnancy**

modification date:	July 12, 2013
content:	Facilitator Notes— <i>Unintended Pregnancy at a Glance Slide Set</i>

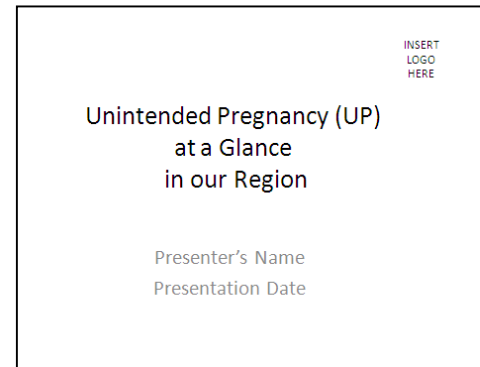
**Overview**

The slide set titled *Unintended Pregnancy at a Glance* looks at unintended pregnancy, comparing national to state and/or local numbers. It should be used to help an organization understand its current situation and set goals. These notes are intended to help the facilitator modify the slide set to fit the needs of his/her organization. Each slide note below indicates the slide purpose and provides instructions for modifying the slide to incorporate local or state data. These notes can also be found in the “Notes” on the bottom of the PowerPoint presentation.

**Slide 1: Unintended Pregnancy at a Glance in our Region**

To Enter your Logo onto the Master Slide:

1. Click the View Tab
2. Click on Slide Master
3. Click on very first slide – that is the slide master
4. Delete the box “Insert Logo Here”
5. Place your logo onto this slide. You can either right click and paste your Logo onto that space and resize to fit the area. Or you can Insert and select Picture and then choose the picture you want to put there. Resize to fit the area.
6. Select the red button that says “Close Master View” on the upper bar.
7. Once you close the Master View the logo will now appear on every slide.



Enter the presenter’s name and presentation data.

1. Click on this area of the slide
2. Edit the existing text.

**Slide 2: The Women We Serve**

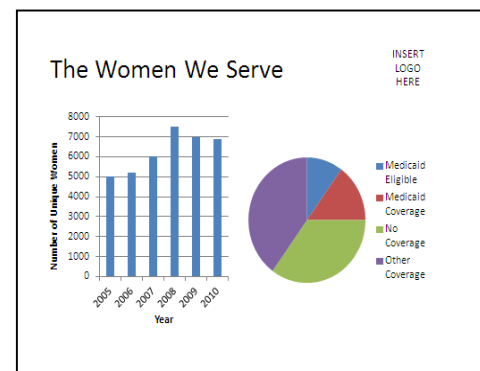
This slide can be used to show the population that is served by your organization. You can present a number of indicators including:

1. Total number of unique women of reproductive age in a year over a specified time period
2. Distribution of women served broken down by age, or race, or insurance and/or Medicaid status

We’ve included two sample graphs that you can edit or use as a guide.

To edit the bar graph:

1. Click on the graph
2. Right click and select Edit Data. Or you can go to Chart Tools and click on the Design Tab, then click Edit Data
3. You can now enter your data.
  - In Column A enter the data that you want to display on the x-axis (horizontal axis). I entered the year that I wanted to show over time.



- In Column B enter the data that you want to appear on the y-axis (vertical axis). I entered the number of unique women for each year.
4. Click the black x in the upper right hand corner to close and you should see the changes appear in the graph.
  5. To change the title of the x- or y-axis:
    - Click on the label
    - Right click and select Edit Text
    - Now type the new label and delete the old label

To delete an x- or y-axis label simply click on the label and hit delete

### Slide 3: Unintended Pregnancy Rates

This slide can be used to show the unintended pregnancy rate in your state compared to the national rate. This rate represents the percentage of pregnancies that were unintended. If your state participates in the Pregnancy Risk Assessment Monitoring System (PRAMS), you can include local-level data.

I've presented data for Mississippi in this slide.

To obtain National and State-level data on unintended pregnancy you can go to the Guttmacher Institute website:

1. <http://www.guttmacher.org/statecenter/unintended-pregnancy/index.html>
2. Click on your state on the map
3. Scroll down and read about your state's unintended pregnancy rate compared to the national rate.

If you don't have local-level data simply delete the last column of this slide by right-clicking on anywhere in the "Local" column and selecting "delete column."

Unintended Pregnancy Rates			
	U.S.	State	Local
Percent of pregnancies that were unintended	49%	65%	
Number of unintended pregnancies per 1,000 women 15-44 years	52	69	

INSERT LOGO HERE

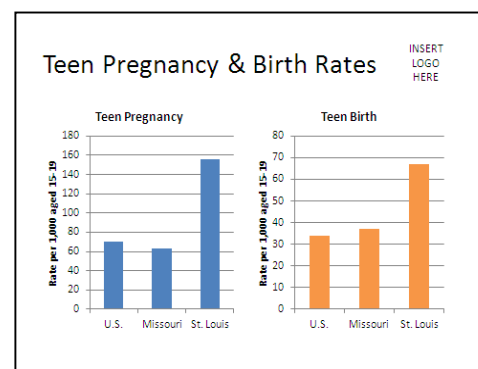
### Slide 4: Teen Pregnancy and Birth Rates

This slide can be used to show the teen pregnancy and birth rates in your state compared to the national rates. If you can obtain local-level data, you should include that data as well.

We've presented data for St. Louis compared to state and national estimates in this slide.

For U.S. and state-level data, you can go to the National Campaign to Prevent Teen and Unplanned Pregnancy:

1. Go to <http://www.thenationalcampaign.org/state-data/state-profile.aspx>
2. Click on your state within the map.
3. Scroll down to the section Teen Pregnancy Data. You will see the Teen Pregnancy Rate overall and broken down by age and race. You will also see the National Rate.
4. Scroll down to the section Teen Birth Data. You will see the Teen Birth Rate overall and broken down by age and race. You will also see the National Rate.
5. Click on the Teen Pregnancy Graph and edit with your state data like you did in Slide 2.
6. Click on the Teen Birth Graph and edit with your state data like you did in Slide 2.



For local-level data you might consider contacting your state or local health department for the teen pregnancy and birth rates. The Missouri Department of Health has an outstanding online data reporting system where one can download information about the number of teen pregnancies and births. You can calculate the rate by dividing the number of teen pregnancies or births by the number of teens aged 15-19 years. The number of teens aged 15-19 can be obtained from the U.S. Census website or your local government agency.

If you don't have access to local-level data, you can remove those bars from the graphs as follows:

1. Click on the graph
2. Right click Edit Data
3. Delete the last row of data
4. Drag the lower right corner of the blue box so that it only surrounds Columns A & B and Lines 1 through 3.

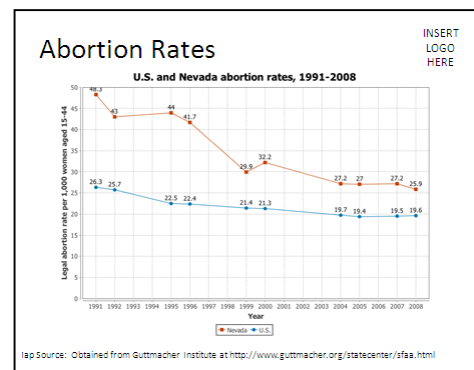
### Slide 5: Abortion Rates

This slide can be used to show the abortion rate in your state compared to the national rate over time. A graph showing your state can be obtained from the Guttmacher Institute.

I've presented data for Nevada in this slide.

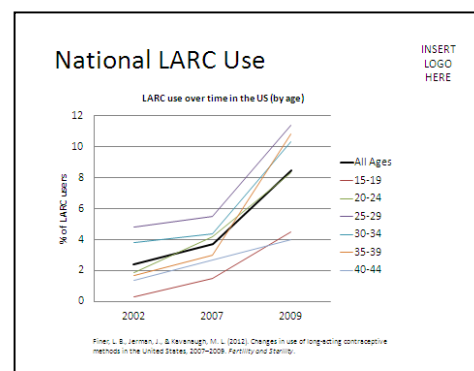
To insert a graph of your own state:

1. Delete the graph that is currently on this slide
2. Go to <http://www.guttmacher.org/statecenter/sfaa.html>
3. Click on your state on the map
4. Scroll down to the graph for your state
5. Place your cursor on the map
6. Right Click and select Copy Image
7. Go back to this slide
8. Place your cursor on the slide, right click and select Paste
9. Center the new graph onto this slide



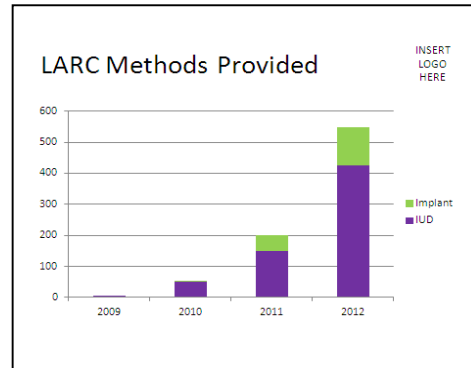
### Slide 6: National LARC Use

This slide can be used to show that long-acting reversible contraceptive (LARC) methods have become more and more popular among all women of reproductive age in the US since 2002. You can also use this slide as a point of comparison for LARC use in your own clinic. For example, how does your clinic's LARC use for women age 15-19 compare to the 2009 national average? If it is lower, use this graph to set goals.



**Slide 7: LARC Methods Provided**

This slide can be used to show the number of LARC methods provided during a particular year. Again, you can show that over time by adding more entries to the x-axis (refer to slide 2 for instructions).



**Slide 8: Our Efforts to Reduce UP**

This slide can be used to show what your organization is doing to reduce UP in your region. Some examples might be:

1. Greater availability of LARC methods
2. LARC training for providers
3. Implementing better billing procedures

However, this list should be tailored to fit the programming of your own organization. Refer to the [LARC FIRST Practice Module](#) for additional information.

**Our Efforts to Reduce UP**

- Greater availability of LARC methods
- LARC training for providers
- Implementing better billing procedures

**Slide 9: Next Steps**

This slide can be used to describe what is next and your “ask” for help. This might include:

1. Partnering with XY agency(ies)
2. Implementing “tiered” contraceptive counseling to increase LARC awareness
3. Increase teen-focused contraceptive care including evening hour appointments

However, this slide should be tailored to reflect the needs of your own organization. Refer to the [LARC FIRST Practice Module](#) for additional information.

**Next Steps**

- Partnering with XY agency
- Implementing “tiered” contraceptive counseling to increase LARC awareness
- Increase teen-focused contraceptive care including evening hour appointments